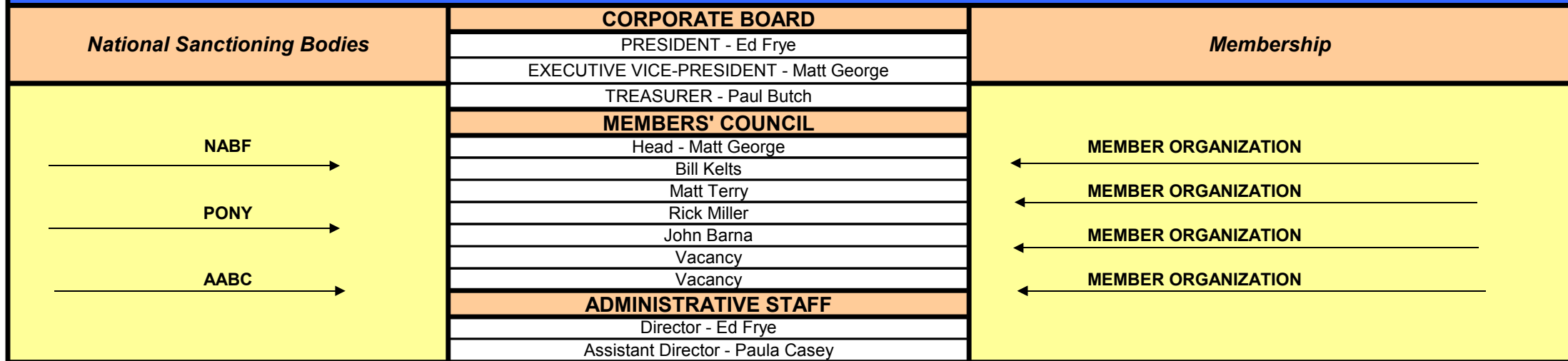


ENYTB OVERVIEW

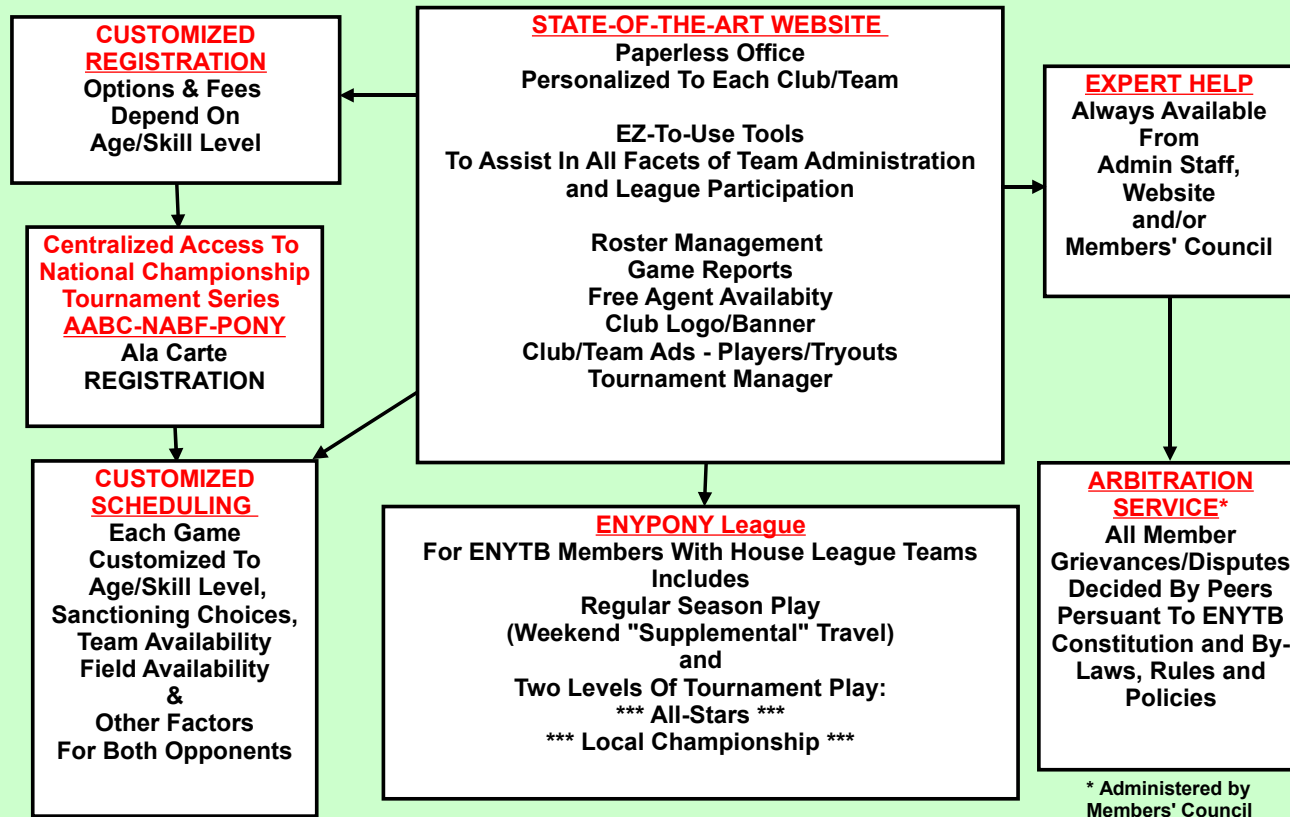
ORGANIZATIONAL STRUCTURE



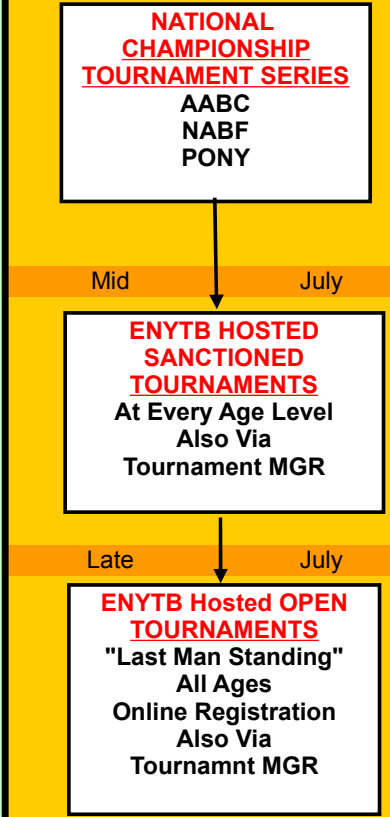
ENYTB PROGRAM SERVICES

SPRING/SUMMER PROGRAM

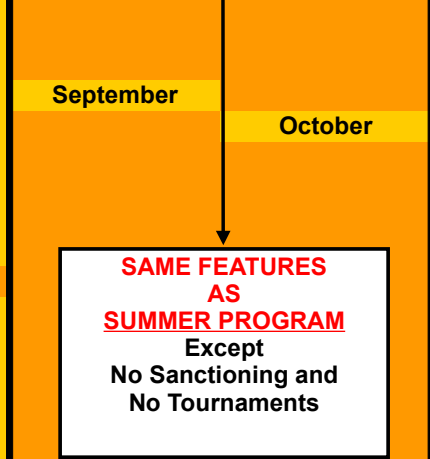
12U & Under = Mid-April thru Mid-June and 13U & Up = Late May thru Mid-July



TOURNAMENTS



FALL PROGRAM



* Administered by Members' Council

| Areas Of Responsibility | | |
|-------------------------|--|--|
|-------------------------|--|--|

| | | |
|----------------------|--|----------|
| Corporate Function - | Governance | CB |
| | Structure | CB |
| | Legislative | CB |
| | Legal Affairs | CB |
| | Financial Affairs | CB |
| | Administration | CB |
| | Program Development | CB/ADMIN |
| | Program Implementation | CB/ADMIN |
| | Judiciary | |
| | Hear Member Appeals | CB |
| MC Function | Interface with Membership | |
| | Judiciary Function | |
| | Enforcement/Interpretation - League Rules | MC |
| | Enforcement/Interpretation - Playing Rules | MC |
| | Arbitration Grievances/Disputes | MC |
| | Between Members | |
| | Handle Member Complaints/Recomendations | MC |
| | Legislative Function - | |
| | The MC is an Advisory Body to the CB. In that role, each member, at his discretion, may develop and propose policy, regulatory and/or legislative changes, for consideration and possible adoption, in whole or part, with or without modification, by the CB. | |
| | Other Duties? | |